



UHF & Cellular Combo Antenna

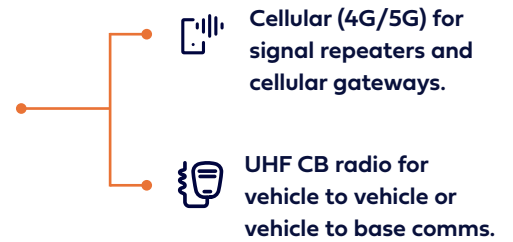
Innovative two-in-one Smart Antenna for cellular and UHF CB devices.

Introducing the world's first two-in-one combo smart antenna that provides signal for UHF CB and cellular 4G/5G devices in a single antenna.

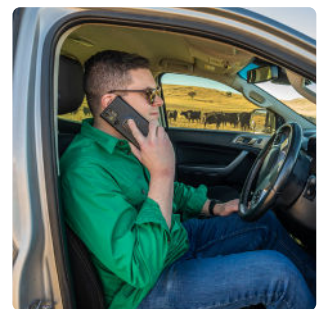
As well as eliminating the need for two antennas, Zetifi's Smart Combo Antenna provides exceptional cellular performance through patent-pending ZetiLink™ technology. An onboard GPS detects your location and feeds this information to an integrated processor with a pre-loaded ZetiLink™ dataset to automatically optimise your CEL-FI signal repeater's frequency bands and power to provide a superior phone boosting experience.

Experience better coverage and convenience thanks to the advanced features of the Zetifi Combo Antenna.

Simultaneous UHF CB and 4G/5G cellular signal from a single antenna.



- Smart band selection and device optimisation for Nextivity CEL-FI ROAM R41 Repeaters.**
- Boost control of CEL-FI ROAM R41 Repeater to turn off device in strong signal areas.**
- Battery protection and monitoring via Zetifi Smart Antenna app.**
- Satellite ready with full compatibility across all direct-to-handset frequencies.**
- Integrated GPS and processor to detect vehicle location and optimise coverage in real-time.**



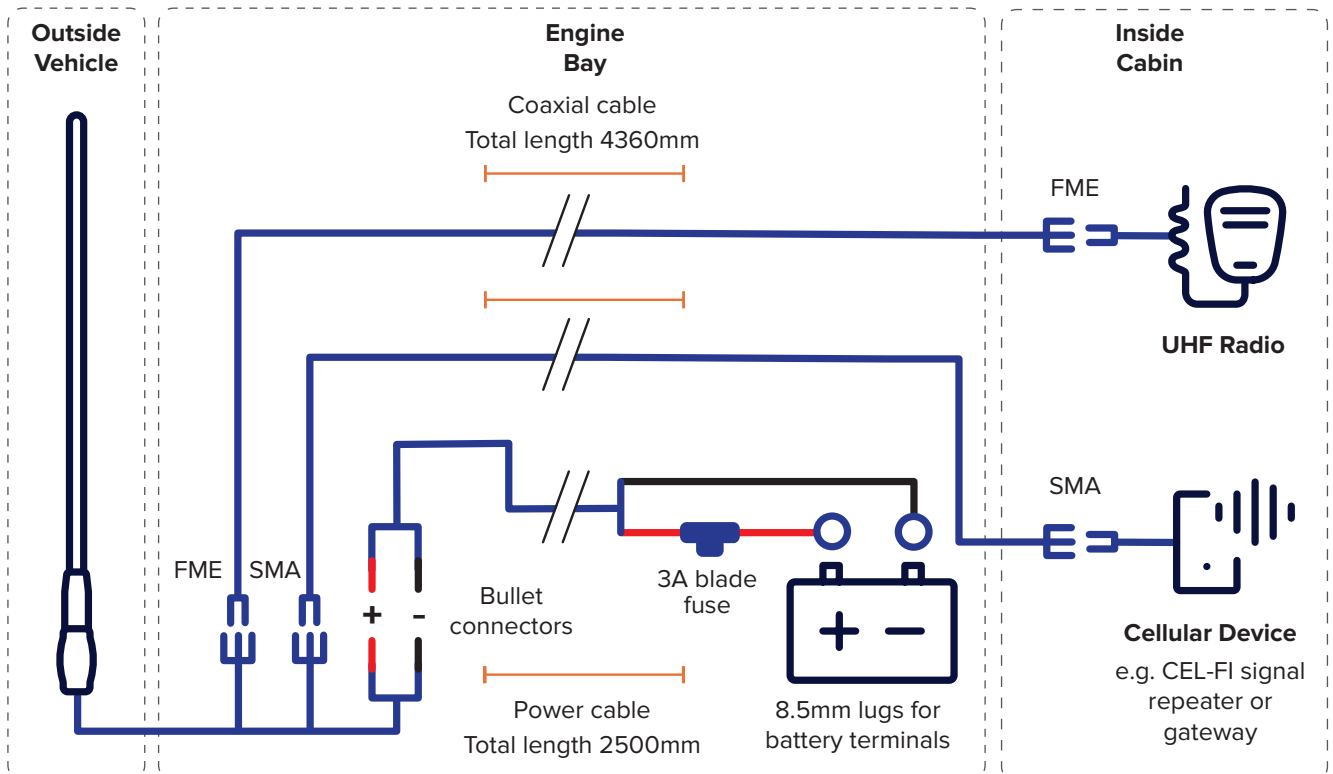
Download Zetifi Smart Antenna app to register, monitor and manage your device.



Physical Dimensions and Kit Components



Wiring Diagram



Not to scale

Technical Specifications (ANMAT1103AU / ANMAT1104AU)

SMART FEATURES



Active band selection to maximise CEL-FI uptime.



Boost control to turn off device when not needed.

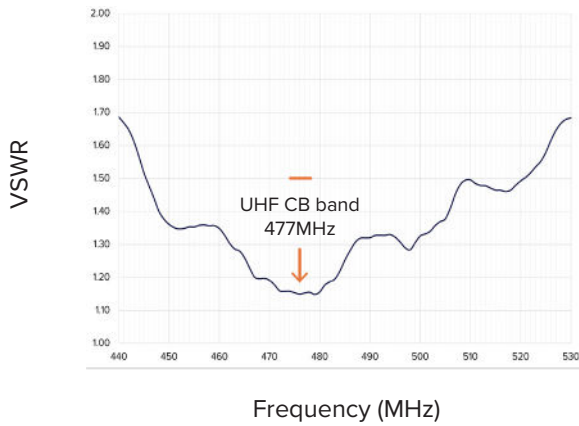


Battery protection and monitoring via app.

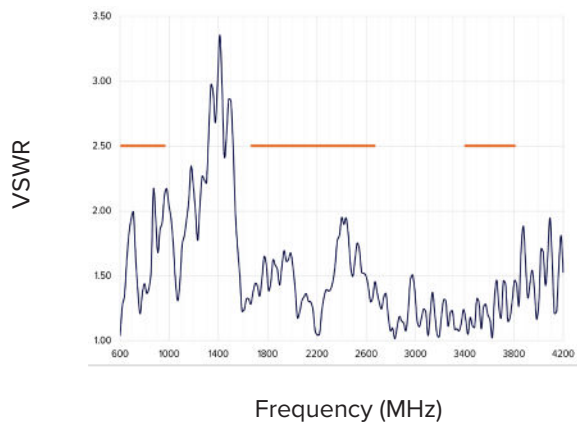
Nominal VSWR

VSWR tests completed with included 4360mm LMR195 coaxial extension cables.

UHF CB



Cellular (4G/5G)

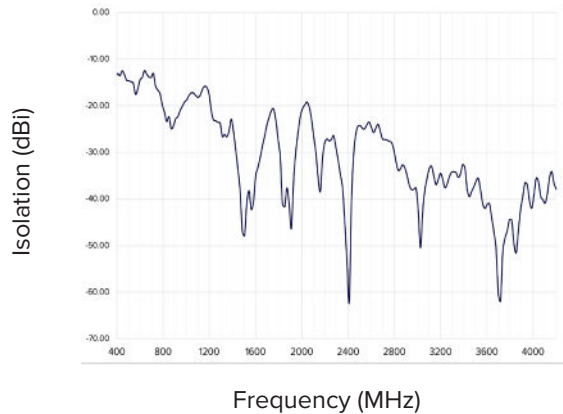


Antenna Separation

Isolation test completed with included 4360mm LMR195 coaxial extension cables.

Smart RF design that vertically stacks the UHF and cellular antenna elements and intensive testing has delivered the required level of isolation between UHF and cellular signals.

Vertical stacking takes advantage of the fact that the strongest radiation occurs in the plane perpendicular to the antenna's length, with minimal energy being radiated along its axis.



Antenna Performance

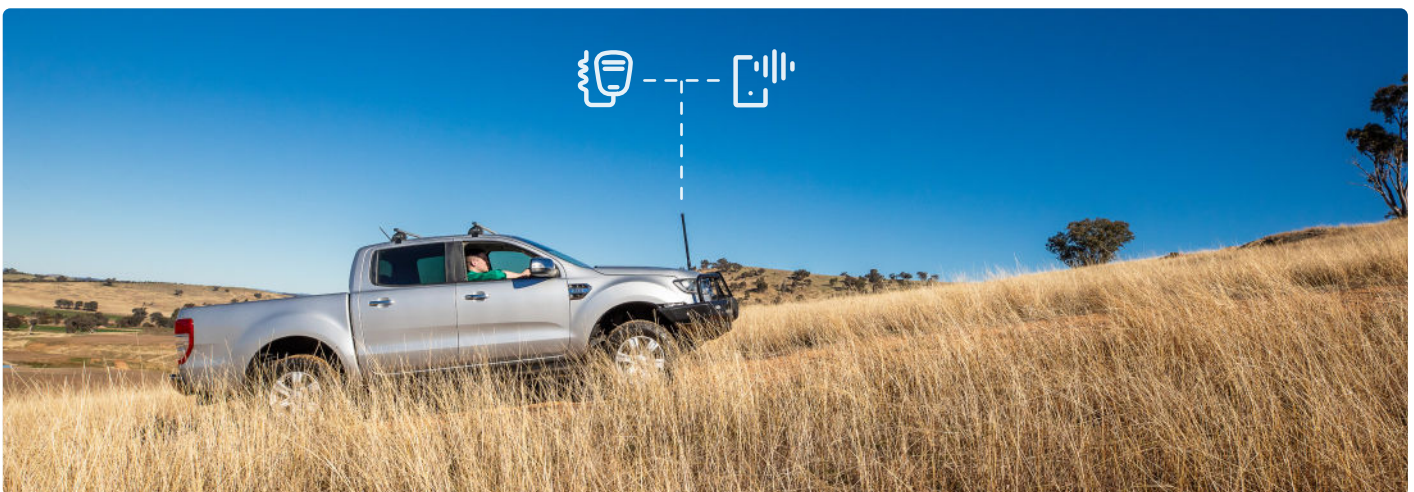
	UHF CB	Cellular (4G/5G)
Gain	2.1dBi	4dBi
Frequencies	477MHz	698-960 MHz, 1710-2700 MHz, 3400-3800 MHz
VSWR	<1.5:1 @ 477 MHz, <2:1 @ 450-520 MHz	<2.5:1 @ 698-960 MHz, <2.5:1 @ 1710-2700 MHz, <2.5:1 @ 3400-3800 MHz
Nominal Impedance	50 Ω	
Processor Electrical		
Input Voltage	Min 12V DC to Max 18V DC	
Input Current	60 mA	
Input Power	0.7 W	

Mechanical	
Construction	Fibreglass whip with UHF/LTE combination PCB antenna element Steel ferrule with integrated PCB ZetiLink™ controller board Bellied spring
Mounting	M14 threaded stud & nut
Mounting Hole	16mm mounting hole
Dimensions	Height: 780mm total / 690mm antenna whip Width: 33mm (antenna whip) / 56mm (spring) / 42mm (base)
Weight	1250g antenna weight / 2310g package weight with cabling
Integrated antenna cables	245mm RG316 low loss coaxial cable terminated with FME female connector (UHF) 190mm RG316 low loss coaxial cable terminated with SMA male connector (cellular) 340mm 20AWG automotive power cable terminated to bullet connectors
Battery cable	2500mm 16AWG automotive power cable with 3A blade fuse terminated to bullet connectors (antenna end) and 8.5mm lugs (battery terminal end)
Coaxial cables	4360mm LMR195 coaxial cable terminated to SMA female (antenna end) and SMA male (cellular device end) 4360mm LMR195 coaxial cable terminated to FME female (antenna end) and FME male (UHF device end)

Ordering Guide

All Zetifi Combo Smart Antennas are available as antenna only or as a bundled solution with the CEL-FI ROAM R41 Signal Repeater from Nextivity.

Combo Antenna	Order Code	Description
ANMA1103AU 780mm Black	ANMA1103AU-02	UHF & Cellular Combo Smart Antenna - 780mm Black
	ANMA1103AU-04	CEL-FI R41 Booster Pack w/ Combo Antenna - 780mm Black
ANMA1104AU 780mm Matte Black	ANMA1104AU-02	UHF & Cellular Combo Smart Antenna - 780mm Matte Black
	ANMA1104AU-04	CEL-FI R41 Booster Pack w/ Combo Antenna - 780mm Matte Black



🔍 For more info visit zetifi.com/comboantennas or call us on 1300 093 711

Copyright © 2024 by Agsenio Pty Ltd ABN 98 621 129 244. Zetifi®, the Zetifi® logo, Connection Awaits®, ZetiCell®, ZetiNet®, Zeti® and ZetiRover® are trademarks of Agsenio Pty Ltd ABN 98 621 129 244. All rights reserved. All other trademarks or registered trademarks listed belong to their respective owners. All specifications subject to change without notice. MM035-AU-BRO-V6